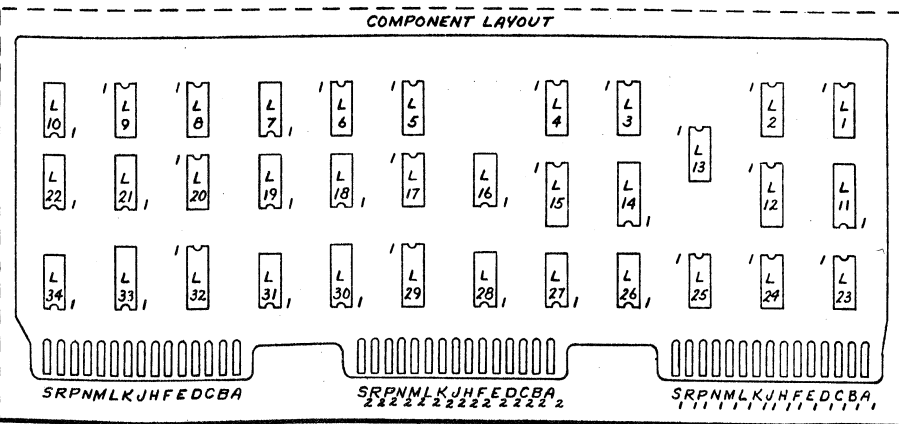
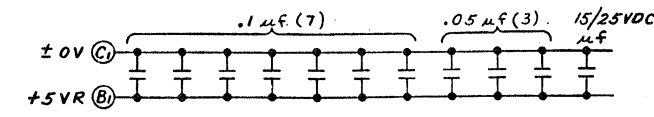
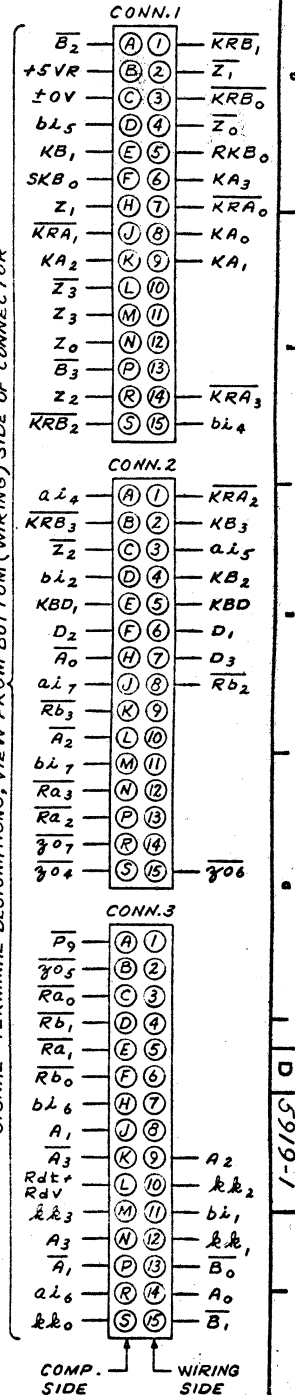


SIGNAL - TERMINAL DESIGNATIONS, VIEW FROM BOTTOM (WIRING SIDE) OF CONNECTOR



I.C. LOCATION	TYPE	W. L. NO.	QTY.	TERM FOR VCC +5VR	TERM FOR ±0V
L19,22,23,25,26,27	SN7400N	376-0002	6	14	7
L1,2,3,4,5,6,8,9,16,34	SN7401N	376-0015	10	14	7
L7	SN7402N	376-0016	1	14	7
L10,13,24,31	SN7404N	376-0010	4	14	7
L17,18,20,21	SN7451N	376-0012	4	14	7
L11,12,14,15,29,30,32,33	SN7476N	376-0007	8	5	13
L28	MC836 OR F9936	376-0026	1	14	7

TOL. EX. AS NOTED	IDENT QTY	NAME	MATERIAL	DESCRIPTION
.XX ±.010				DR F.S.S. DATE 3-13-70
.XXX ±.005				CHK RJT DATE 3-27-70
FINISH				APPD SKHD DATE 3-27-70
MATERIAL	MODEL NO.	W.O. No.	SCALE	SHEET OF
FINISH	TITLE SCHEMATIC LOGIBLOC #5919 BUS-1			
	PART NUMBER	REV	SIZE	DRAWING NUMBER
		1	D	5919-1

BY	DATE
REVISION	REVISOR
NO	APPD